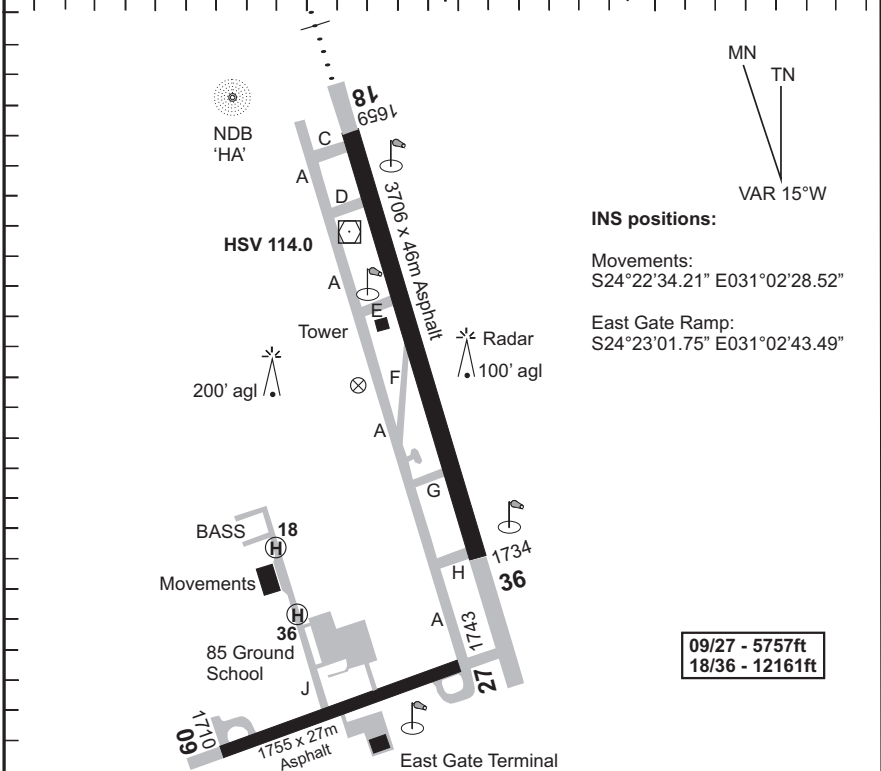


Elev **1738** A/D **S24°21.3'**
 REF PT **E031°03.0'**

HOEDSPRUIT AFB AERODROME

FAHS

Approach 126.4	Tower 119.6	Radar 119.6 123.3	HSV 114.0	AD-01 EFF 08 July 04
--------------------------	-----------------------	-----------------------------	---------------------	-----------------------------------



RWY	PAPI	APPROACH	THR	RUNWAY	L. DIST	SLOPE
09 (078°T)	P3°	Nil	Gr	HRL	Full	0.57U
27 (258°T)					Full	0.57D
18 (164°T)	P2.8°	SALS	Gr	HRL	Full	0.59U
36 (344°T)		Nil			Full	0.59D

OTHER LIGHTING: Obstruction, TWY 18/36

CIRCUITS

Piston: 2700ft
 Turbine: 2700ft
 Jet: 3200ft
 (East of AD)

STOPWAYS

RWY 09 - 81m (266ft)
 RWY 27 - 93m (305ft)
 RWY 18 - 338m (1109ft)
 RWY 36 - 300m (984ft)

LCN

RWY 18/36 - 74
 RWY 09/27 - 74
 TWY 18/36 - 50

1. UNLICENCED MILITARY AERODROME.
To be used in emergency only.
 2. Power lines east of aerodrome.
 3. Wildlife on AD.

© AV/DIRECT 24/01/04

CAA South Africa

Rev: Chart #.

WGS-84